

Dimension — Details

Version 1

Spread
 $20^{\circ}\text{C} = 36^{\circ}\text{F}$

temperature difference
between flow and return

2"
Cascade
System
112 KW

Spread
 $20^{\circ}\text{C} = 36^{\circ}\text{F}$

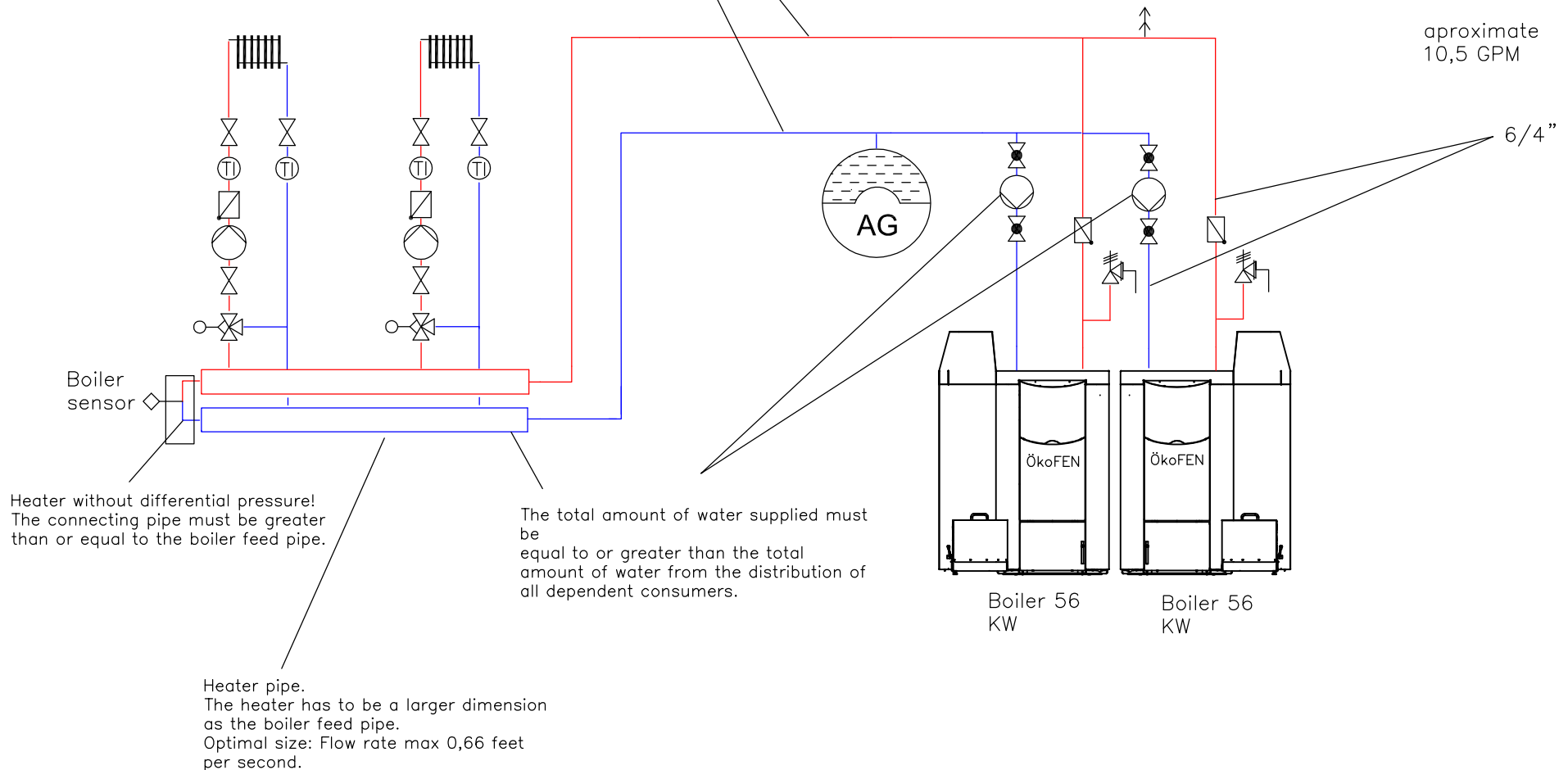
aproximate
21 GPM

Boiler 56
KW

Spread
 $20^{\circ}\text{C} = 36^{\circ}\text{F}$

aproximate
10,5 GPM

6/4"



The diagram is symbolic and not exhaustive.

Dimensioning—Details

Version 2

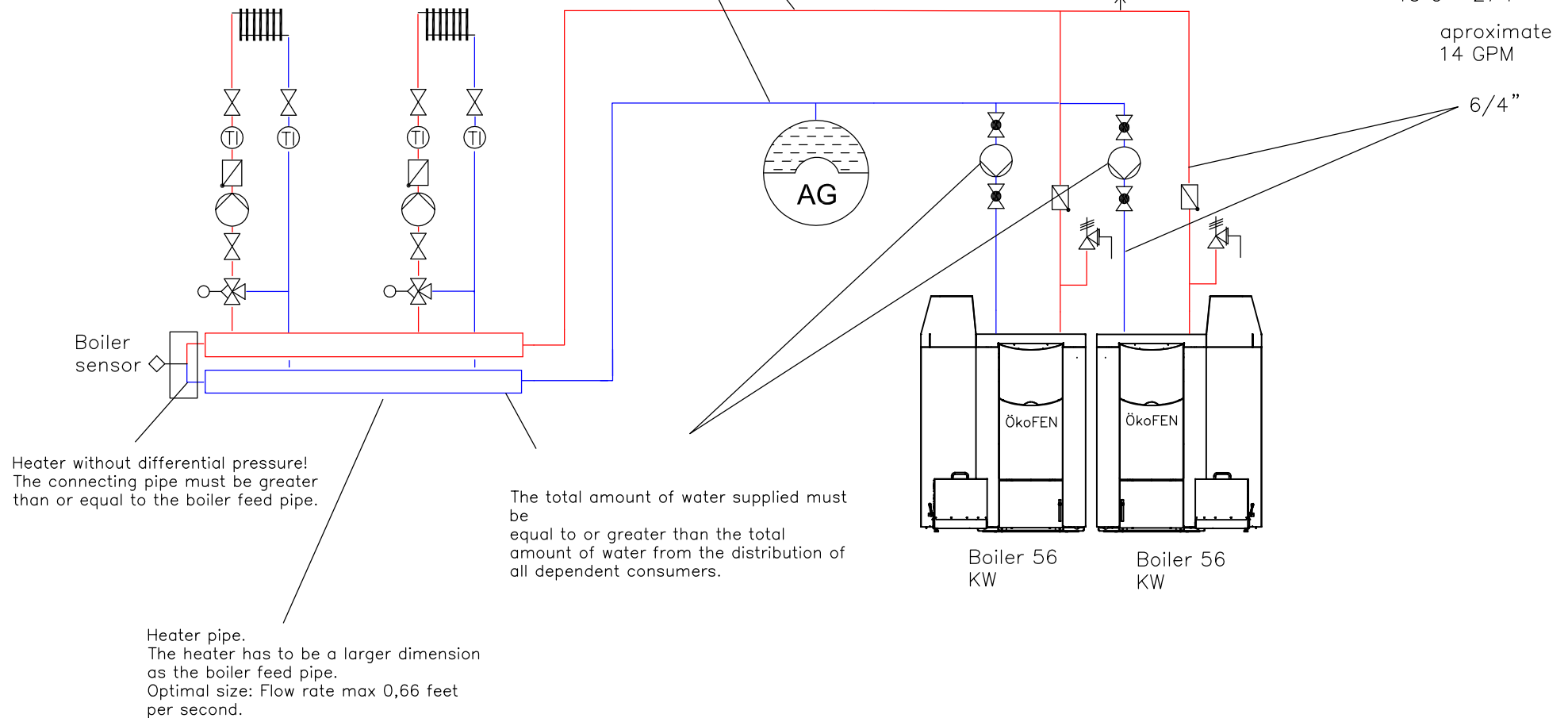
Spread
 $15^{\circ}\text{C} = 27^{\circ}\text{F}$

temperature
between flow and return

$2\frac{1}{2}"$
Cascade
System
112 KW
Spread
 $15^{\circ}\text{C} = 27^{\circ}\text{F}$
aproximate
28 GPM

Boiler 56
KW
Spread
 $15^{\circ}\text{C} = 27^{\circ}\text{F}$
aproximate
14 GPM

$6\frac{1}{4}"$



The diagram is symbolic and not exhaustive.

Dimension – Details

Version 3

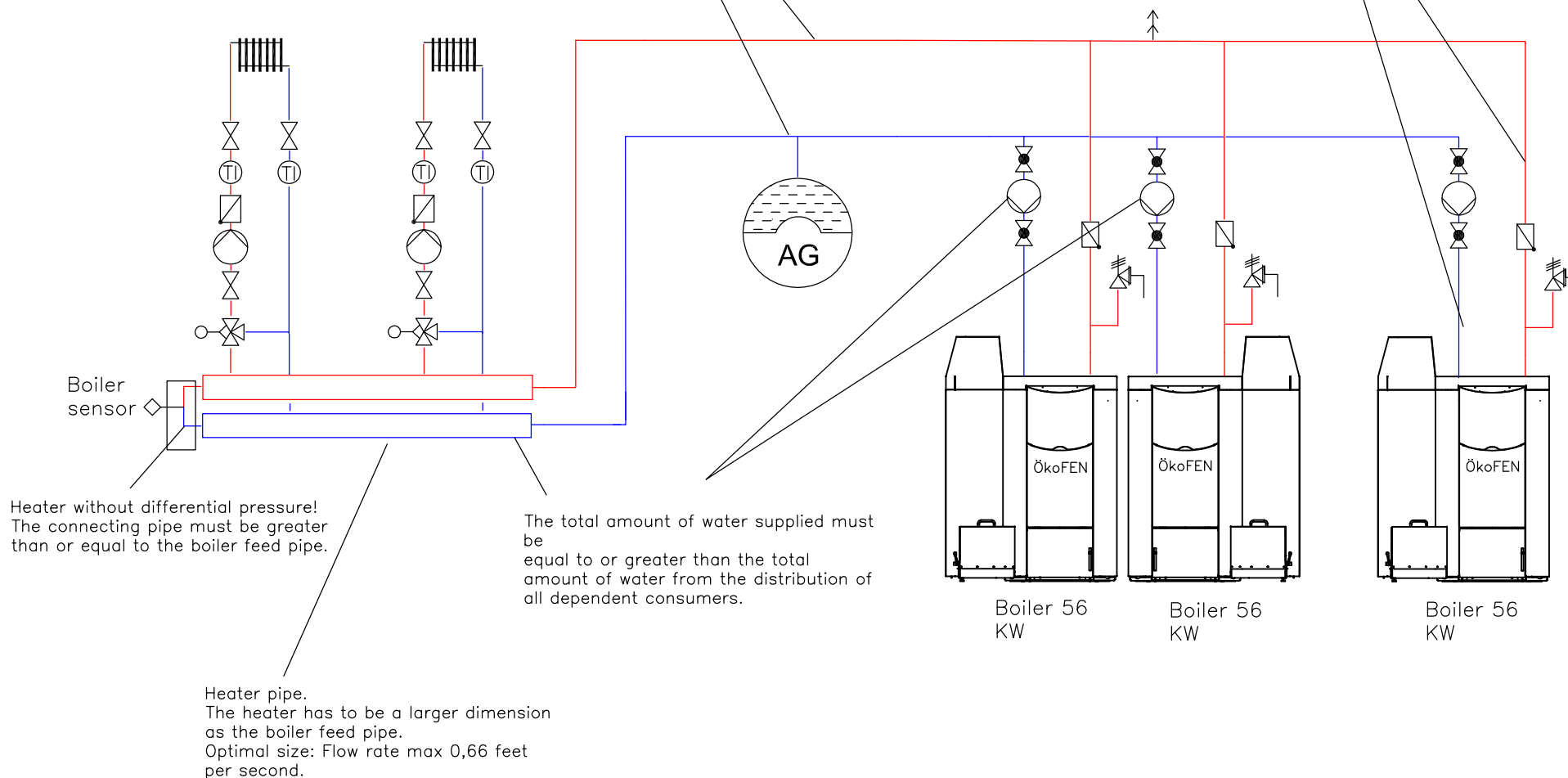
Spread
 $20^{\circ}\text{C} = 36^{\circ}\text{F}$

temperature difference
between flow and return

$2\frac{1}{2}''$
Cascade
System
168 KW
Spread
 $20^{\circ}\text{C} = 36^{\circ}\text{F}$
aproximate
31,5 GPM

Boiler 56
KW
Spread
 $20^{\circ}\text{C} = 36^{\circ}\text{F}$
aproximate
10,5 GPM

$\frac{6}{4}''$



The diagram is symbolic and not exhaustive.

Dimension — Details

Version 4

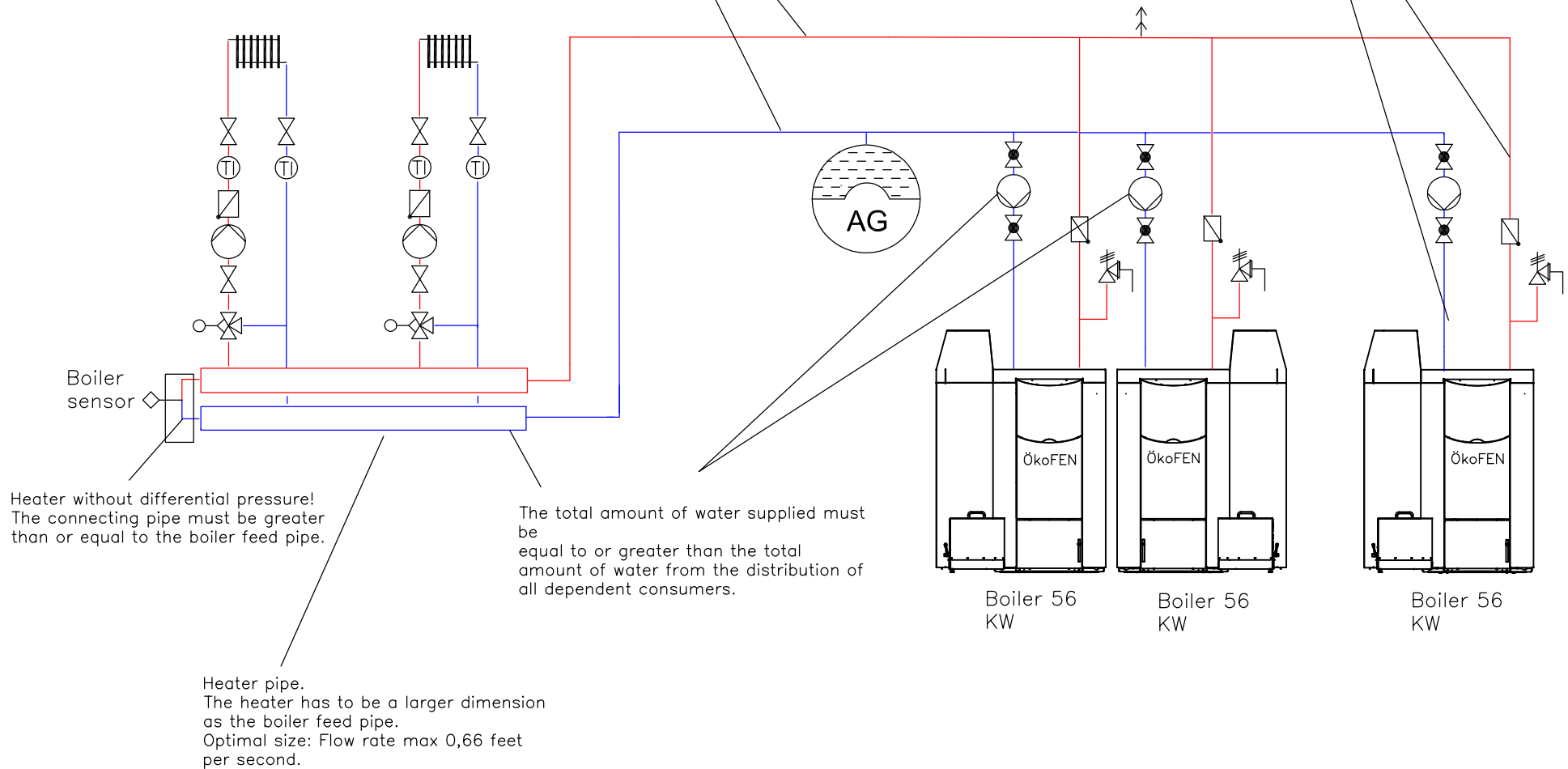
Spread
 $15^{\circ}\text{C} = 27^{\circ}\text{F}$

temperature difference
between flow and return

$2\frac{1}{2}''$
Cascade
System
168 KW
Spread
 $15^{\circ}\text{C} = 27^{\circ}\text{F}$
aproximate
42 GPM

Boiler 56
KW
Spread
 $15^{\circ}\text{C} = 27^{\circ}\text{F}$
aproximat
14 GPM

$\frac{6}{4}''$



The diagram is symbolic and not exhaustive.

Dimension – Details

Version 5

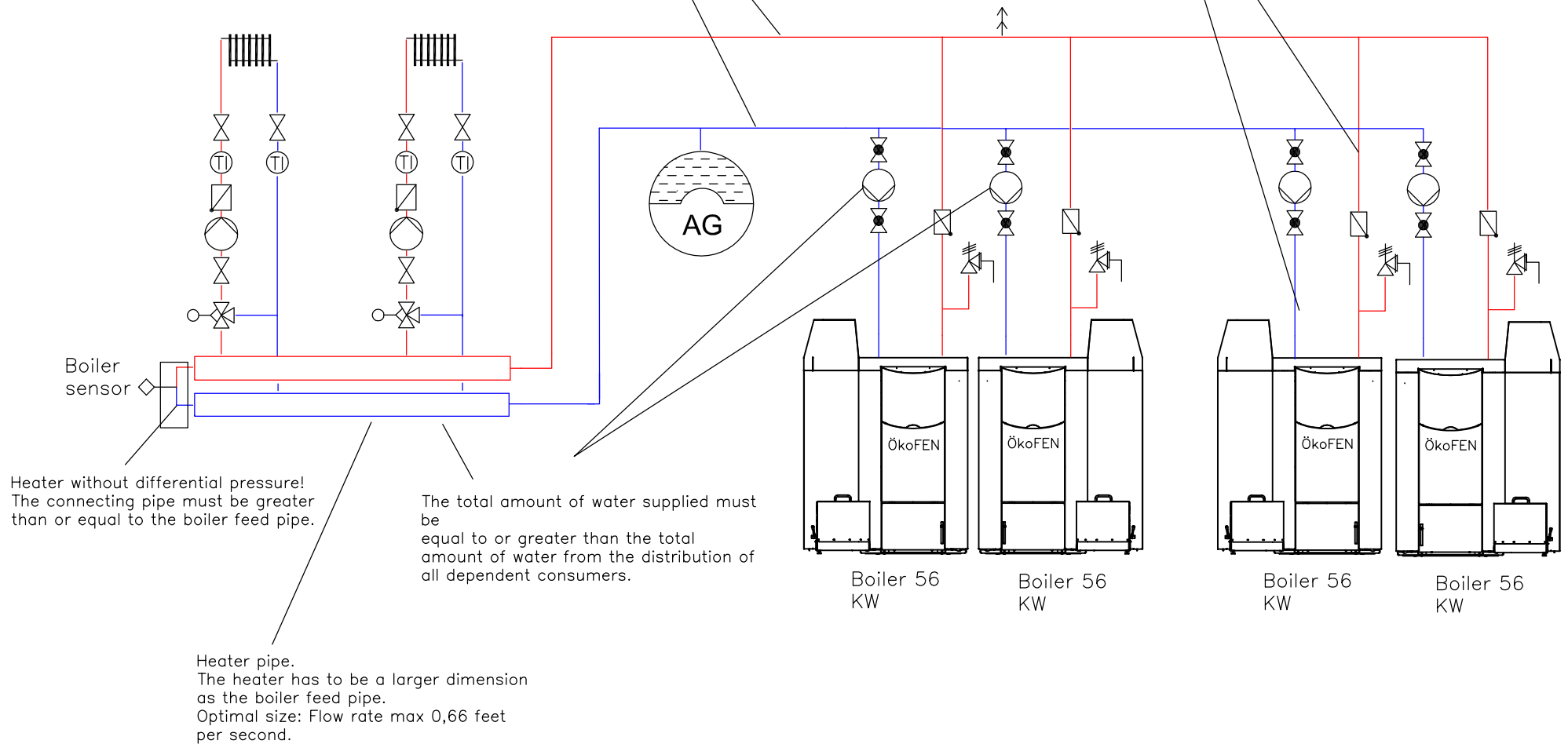
Spread
 $20^{\circ}\text{C} = 36^{\circ}\text{F}$

temperature difference
between flow and return

2 1/2" Cascade System 224 KW Spread $20^{\circ}\text{C} = 36^{\circ}\text{F}$ aproximate 42 GPM

Boiler 56 KW Spread $20^{\circ}\text{C} = 36^{\circ}\text{F}$ aproximate 10,5 GPM

6/4"



The diagram is symbolic and not exhaustive.

Dimension – Details

Version 6

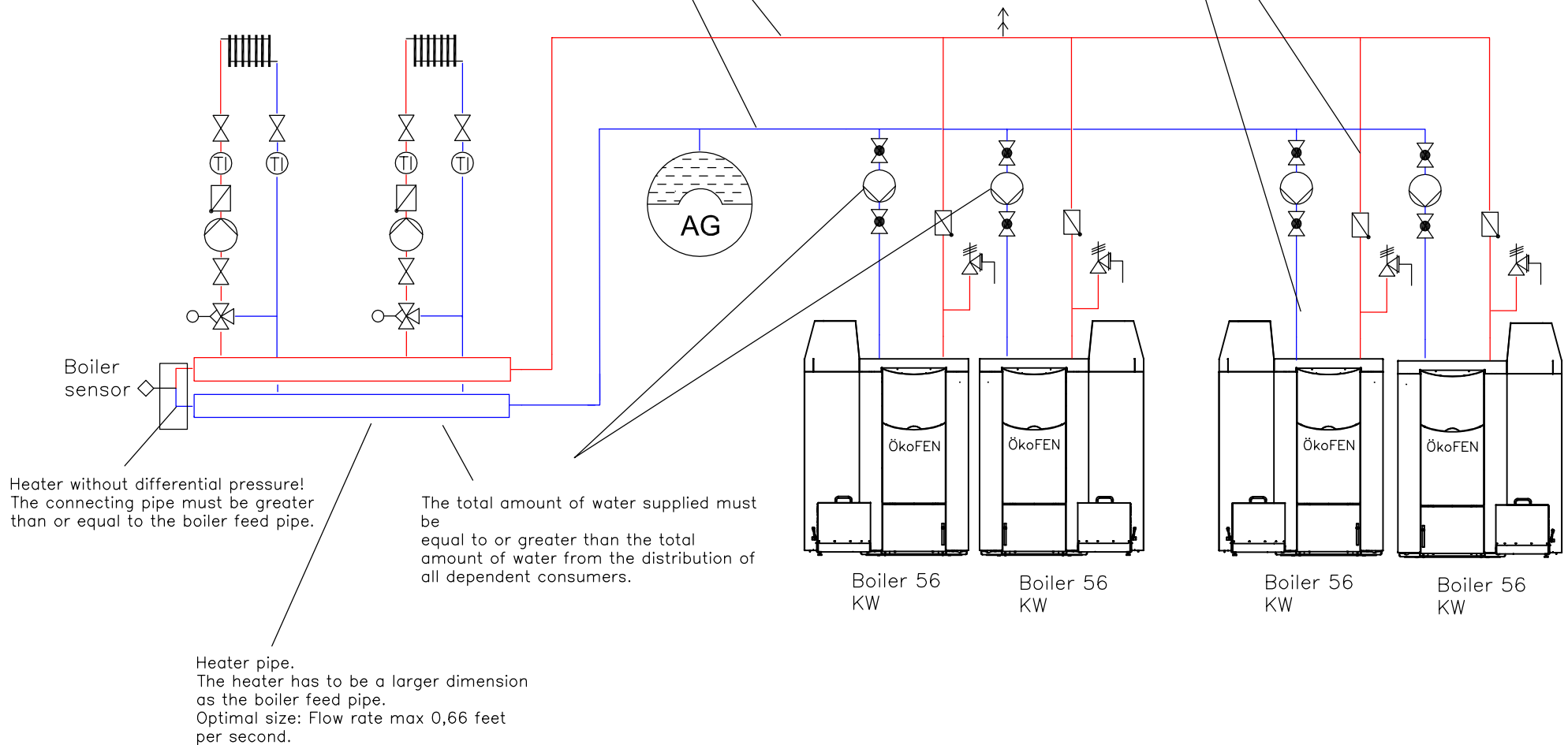
Spread
 $15^{\circ}\text{C} = 27^{\circ}\text{F}$

temperature difference
between flow and return

3" Cascade System
224 KW
Spread
 $15^{\circ}\text{C} = 27^{\circ}\text{F}$
aproximate
56 GPM

Boiler 56 KW
Spread
 $15^{\circ}\text{C} = 27^{\circ}\text{F}$
aproximate
14 GPM

6/4"



The diagram is symbolic and not exhaustive.