

MESys Fill Kit Instruction Manual

10/20/2008 Version I

List of materials:

- Spiral clamp (4)
- 5" band clamp (2)
- 8.5" band clamp (1)
- Male quick connect coupling (2)
- Coupling cap (2)
- Face plate (2)

Materials not included:

- Silicone spray
- Silicone caulking
- Fill hose (Purchased separately due to need for varying lengths)
- Screws for face plate

Tools not included:

- Rubber mallet
- Heat gun
- Flat head screw driver or 8mm drive socket
- 5" hole saw
- Chisel
- Electric drill
- Adjustable wrench
- Caulking gun

Steps

- Plan, measure & mark
- Cut hole in wall
- Assemble outside hose end
- Insert hose
- Secure hose/coupling
- Secure hose to storage container
- Install filter

Notes

- A generous application of silicone spray will make insertion of coupling into hose much easier
- Follow manufacturer's instructions for silicone spray
- Do not use a lubricant that will break down the rubber like WD 40
- Always use appropriate safety gear such as safety glasses and gloves
- Couplings must be accessible from outside and no more than 60 ft from a plowed and available parking spot for the delivery truck

Instructions:

1. Plan, measure & mark

- Take some time to consider the location of the couplings
 - Make sure you choose a spot that is accessible to the driver of the delivery truck
 - Locate the couplings at the closest point to the drive way
 - Maximum recommended distance from driveway is 50ft
 - The couplings should be located above ground level but not higher than chest level
 - Make sure the location is accessible from inside so that you will be able to complete the installation maintaining a minimum suggested bend radius of 30 inches to the hose. Bends between 30 and 24 inches should be accomplished with pre-bent steel tubing. Bends sharper than 24 inches should not be considered.
- Measure from a common land mark like a chimney
 - An 18" long drill bit may be useful as a pilot but be careful not to make unnecessary holes or to over-drill and damage inside wiring or walls
- Mark and recheck the planned location of the couplings

2. Cut hole in wall

- Using whatever tools are most appropriate for the material
- A 5" hole saw is useful for wooden walls
- It will be necessary to cut a notch in the wall to accept the screw section of the band clamp holding the hose to the coupling

3. Assemble outside hose end (See photo 2)

- Insert coupling through hole in faceplate
- Spray a generous amount of spray silicone on the coupling and into the hose end
- Insert coupling into hose end
 - Pressing against the ground and or use of a rubber mallet will aid insertion
 - In some cases it will be necessary to use a heat gun to expand hose before coupling insertion
 - Due to varying inside diameter of the hose, it may be necessary to split the hose from the end for up to, but never more than two inches to be able to push the hose all the way onto the coupling
 - It is important to position the hose all the way onto the coupling before clamping
- Use 5" band clamp to secure hose to coupling

4. Insert hose

- Push the end of the hose through the hole in the wall
 - It may be useful to tie a rope to the hose end to pull through hard to reach spots

- 5. Secure hose/coupling
 - Use screws to secure face plate to wall (See photo 3)
 - Use spiral clamps to secure hose to inside of wall (see photo 4)
 - Pull hose to create tension
 - Spin clamp into place
 - Tighten clamp

- 6. Secure hose to storage container
 - For galvanized steel bins (see photo 5)
 - Spin spiral clamp into place
 - Spray fill and return nozzles and inside of hose with silicone spray
 - Push hose into place, making sure that the entire nozzle is in the hose
 - Tighten spiral clamps securely
 - For indoor bag storage unit (See photo 6)
 - Put sleeves on top of the “bag” through Spiral clamps
 - Insert hose into sleeve
 - Using some spray silicone may be necessary
 - Tighten spiral clamps
 - Use one of the bag ties to secure the fill hose to frame
 - Make sure the fill hose goes into the sleeve in the middle of the bag and that the hose is situated such that it will spray parallel to the floor

- 7. Install filter (See photo 7)
 - Place filter over vent nozzle
 - Secure with 8.5” band clamp

Photos:



(Photo 1: MESYS fill kit components)



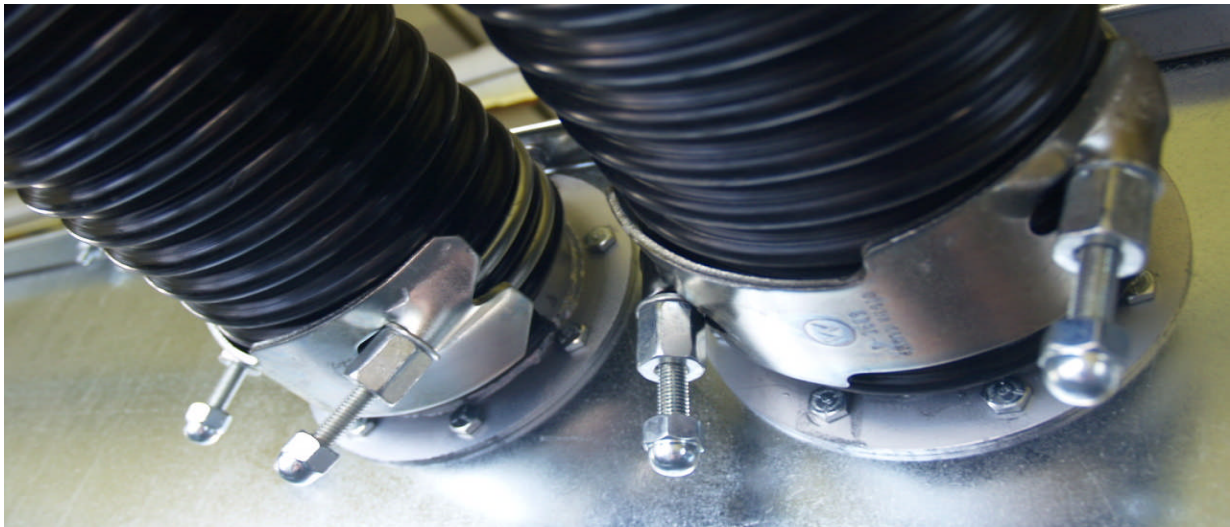
(Photo 2: Assembled outside end of hose)



(Photo 3: Installed couplings)



(Photo 4: Spiral clamps used to hold hoses in place)



(Photo 5: Hoses attached to storage bin)



(Photo 6: Hoses attached to storage bag)



(Photo 7: Installed Filter bag)